



YOUR YELLOW BIN

**CLEAN - DRY - LIDS
REMOVED!**

- * ALUMINIUM CANS
- * STEEL CANS (BEANS, PET FOOD)
- * PLASTIC CONTAINERS (YOGHURT, CLEANING CHEMICAL CONTAINERS)
- * WAXED CARDBOARD CARTONS (MILK, JUICE)
- * ALFOIL (COLLECT INTO A BALL BIGGER THAN A GOLF BALL FIRST)
- * GLASS BOTTLES & JARS
- * PAPER, CARDBOARD, NEWSPAPERS, MAGAZINES, GIFTWRAP
- * PLASTIC MILK BOTTLES & DRINK BOTTLES (LIDS REMOVED)



REDCYCLE

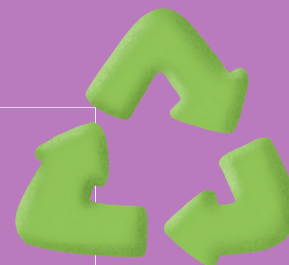
**TAKE TO YOUR LOCAL COLES OR
WOOLWORTHS**

- * PLASTIC BREAD BAGS
- * CHIP/CRISP/BISCUITS PACKETS
- * PASTA / RICE PACKETS
- * BOX LINERS (CEREAL, FLOUR, ETC)
- * OLD SHOPPING BAGS (INCLUDING THE REUSABLE ONES)

BULLSBROOK RECYCLING FACILITY

121 STOCK WEST RD, BULLSBROOK

- * E-WASTE (MOBILE PHONES, COMPUTERS, TVS ETC)
- * WHITEGOODS (WASHING MACHINES, MICROWAVES ETC)
- * GREEN WASTE
- * TIMBER (SCRAPS, UNTREATED) / BUILDING RUBBLE
- * OIL (20LTR MAX) / TYRES (4 MAX - COST INCURRED)
- * MATTRESSES
- * OLD FURNITURE & BIKES
- * POLYSTYRENE & PLASTIC STRAPPING



SPECIALIST RECYCLING

BRING INTO OUR STORE:

- * COFFEE PODS (TERRACYCLE)
- * DENTAL PRODUCTS (TERRACYCLE)
- * PENS, MARKERS & TEXTAS (TERRACYCLE)
- * PLASTIC BOTTLE TOPS AND BREADTAGS
- * LIGHTBULBS, BATTERIES & PRINTER CARTRIDGES
- * MOBILE PHONES & E-WASTE

COMPOST / WORM FARM / SHAREWASTE

- * FOOD SCRAPS (NO MEAT OR DAIRY)
- * GARDEN WASTE
- * DUST / FLOOR SWEEPINGS / VACCUM COLLECTION
- * TEA / COFFEE GRINDS
- * TISSUES & NAPKINS
- * SPECIFIC PAPERBOARD PACKAGING